



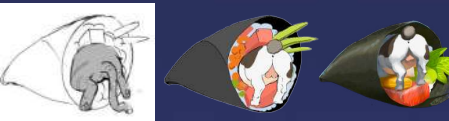
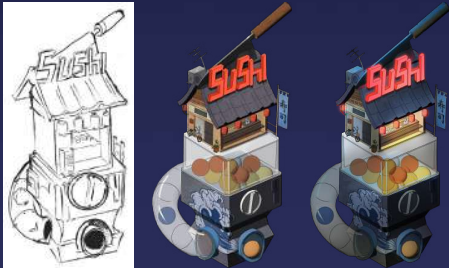
Please keep in mind that:

1. **EVERY** design, sketches, and ideas presented in the following document are *properties of CyberIce Studio Ltd.*
2. **NO** graphics been generated from AI.
3. **The data** in these slides are **CONFIDENTIAL**.

Sumplong - Production Split

2D Graphic Design

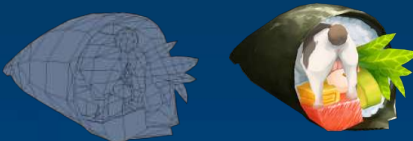
We gather your preferences and draw the feel & direction.



~ 1 weeks Production

3D Graphic Production

Every 2D assets made in 3D.



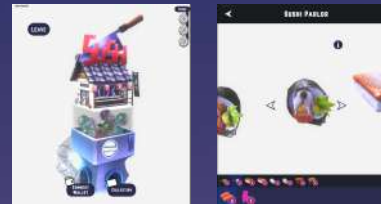
~ 2 weeks Production

UI / UX

To design a friendly interface for your audience target.

~ 1 weeks Production

Graphic Integration Interactive Product



~ 1 weeks Production

Release Online

Or new page or website from scratch.

- Integrated to your website.
- New page to your website
- A brand new site.

Contact us for more details

OR

Release Venue

A touch panel on your Venue where your customers can interact.

Contact us for more details

Sumplong - Production Timeline

2D Graphic Design

~ 2 weeks Production

3D Graphic Production

~ 2 weeks Production

Coupon System

~ 1 week Production

1 month total production

UI / UX

~ 1 weeks Production

Graphic Integration Interactive Product

~ 1 weeks Production

Release Online

Or new page or website from scratch.

- Integrated to your website.
- New page to your website
- A brand new site.

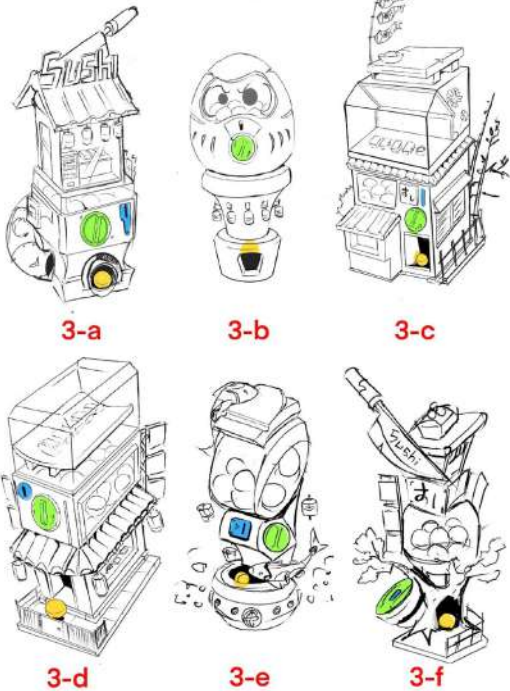
Contact us for more details

Release Venue

A touch panel on your Venue where your customers can interact.

Contact us for more details

Step 1 - 2D Graphic - Machines



Sketch & Research

- Sketches to define direction.



Flat & Selection

- Selected sketches are cleaned.
- A simple color is applied.

Content & Duration

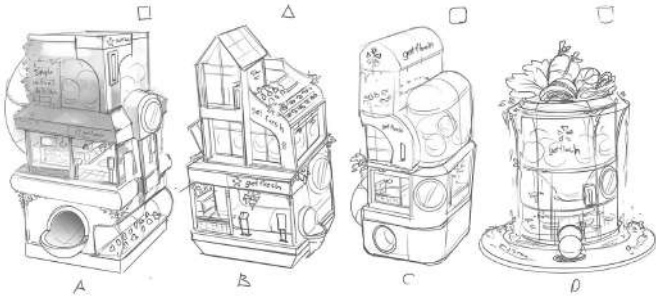
- x6 Sketches (~2 days)
- x3 Flat Design (~2 days)
- x1 Machine Final Design (~1 day)



Final Concept

- Final Feel and ambience.

Step 1 - 2D Graphic - Machines



Sketch & Research

- Sketches to define direction.



Content & Duration

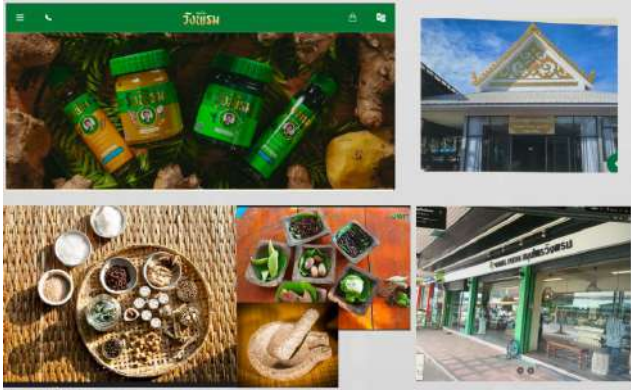
- x4 Sketches (~2 days)
- x1 Machine Design (~2 days)
- x1 Final concept inUi theme (~1 day)



Final Concept in UI Theme

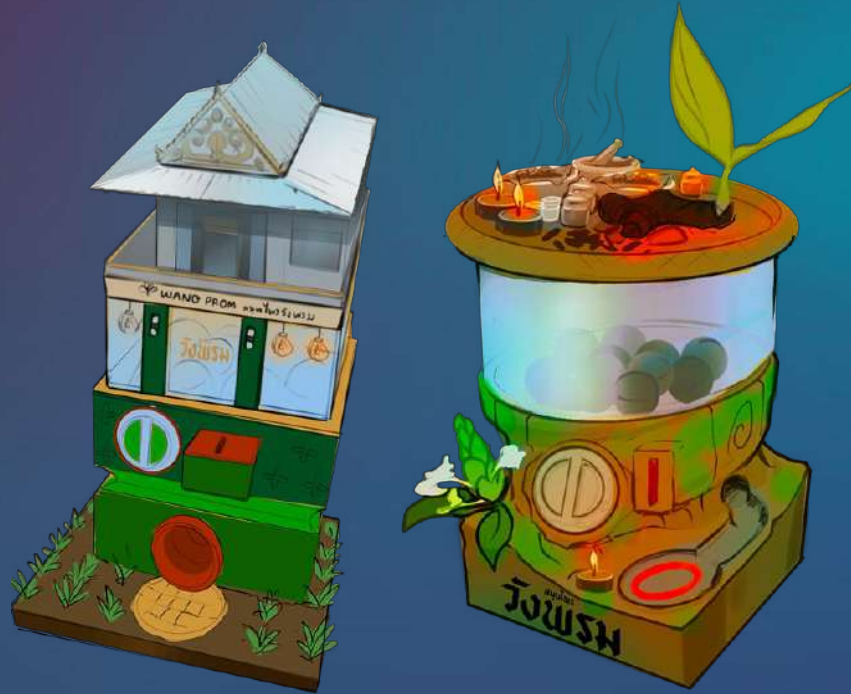
- Match the machine To UI Direction

Step 1 - 2D Graphic - Machines



Sketch & Research

- Sketches to define direction.



Content & Duration

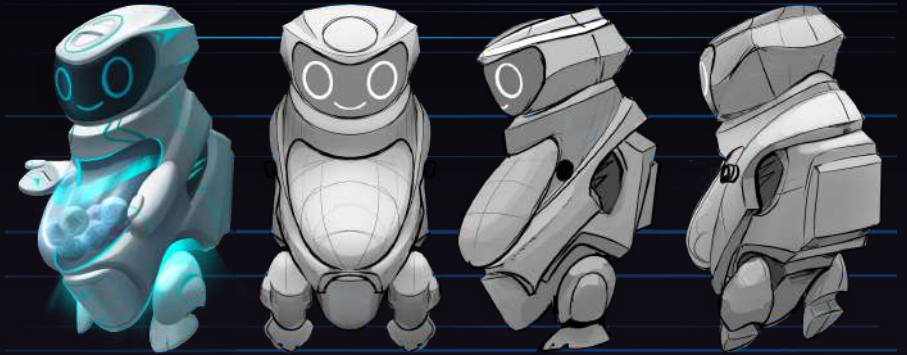
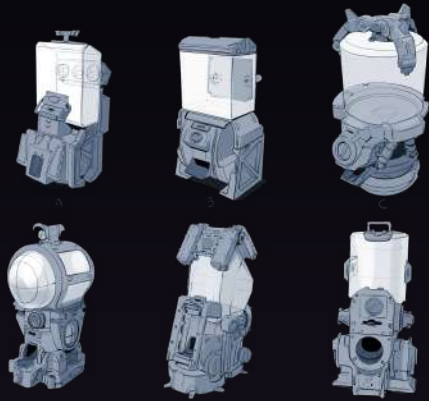
- x4 Sketches (~2 days)
- x1 Machine Design (~2 days)
- x1 Final concept in Ui theme (~1 day)



Final Concept in UI Theme

- Match the machine To UI Direction

More Machines



Step 2

- 2D Graphic - Toys



Sketch & Research

- Sketches to define direction.



Flat & Selection

- Selected sketches are cleaned.
- A simple color is applied.

Content & Duration

- x12 Sketches (~ 2 days)
- x6 Flat (~ 1 day)
- x4 Toys Final Design (~ 2 days)



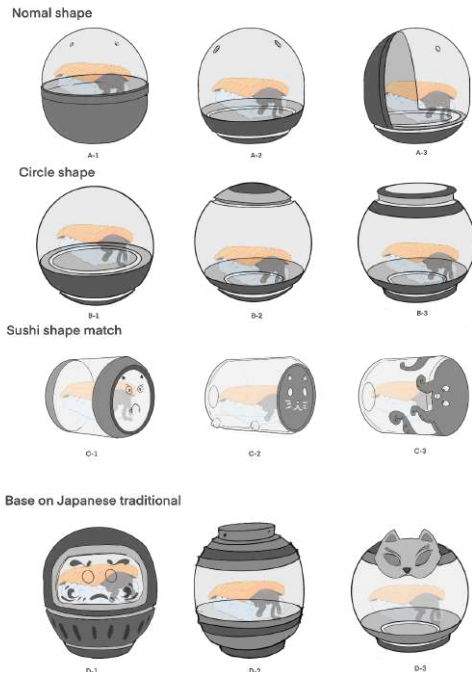
Final Concept

- Final Feel matching your website.

More Toys

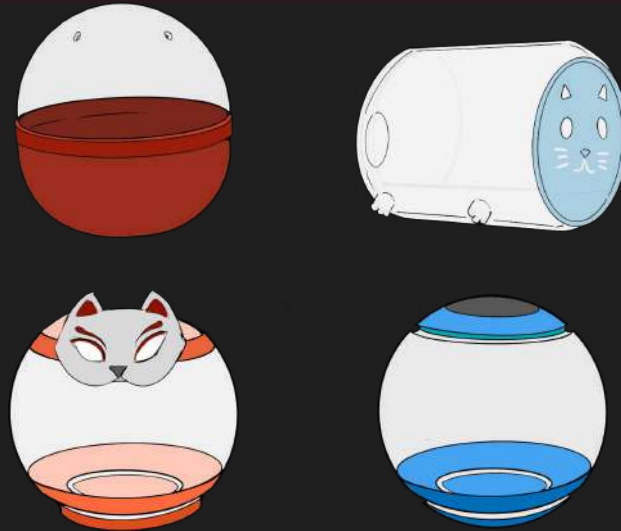


Step 3 - 2D Graphic - Capsule



Sketch & Research

- Sketches to define direction.

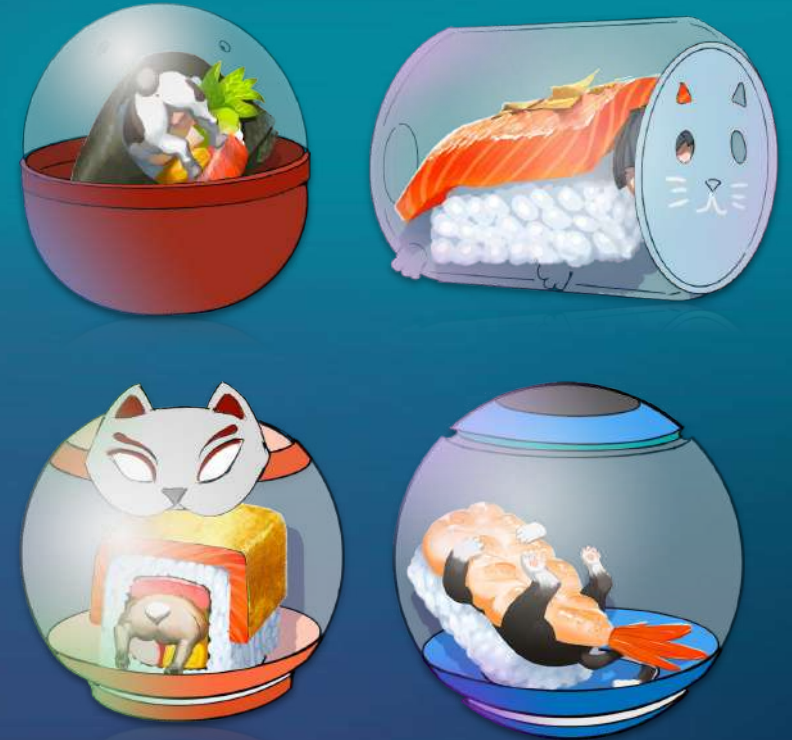


Flat & Selection

- Selected sketches are cleaned.
- A simple color is applied.

Content & Duration

- x6 Sketches (~1 day)
- x4 Flat (~1 day)
- x4 Final Capsule Design (~2 days)



Final Concept

- Final Feel matching your website.

More Capsules

Normal shape



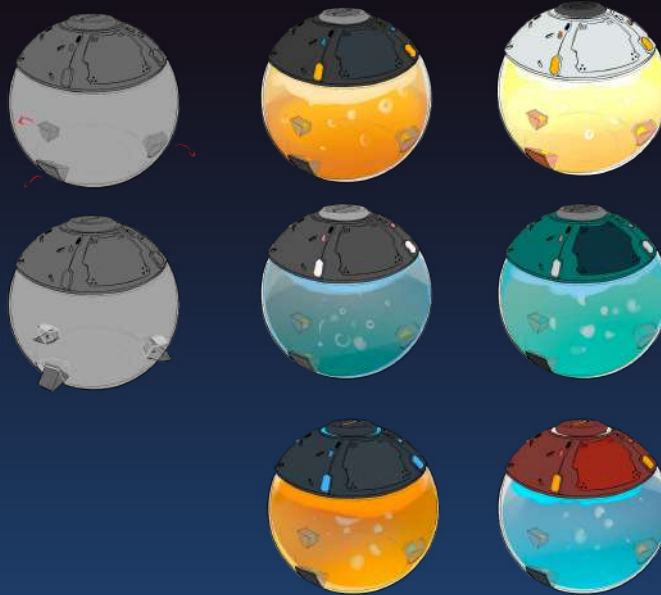
Circle shape



Sushi shape match



Base on Japanese traditional



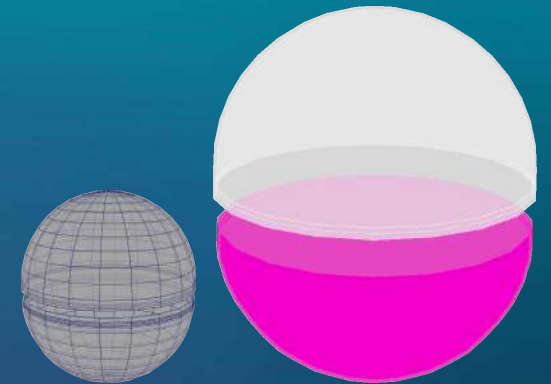
Step 4- 3D Graphic



Machine



Toys



Capsule

Content & Duration

- x1 Machine ~ 5 days
- x4 Toys ~ 5 days
- x1 Capsules (x4 variation) ~ 1 days

More 3D Graphic



More 3D Graphic



SUMPLING!

ສຸມປລອຈ໌



SUMPLING!

ສຸມປລອຈ໌



SUMPLING!

ສຸມປລອຈ໌



SUMPLING!

ສຸມປລອຈ໌



SUMPLING!

ສຸມປລອຈ໌



SUMPLING!

ສຸມປລອຈ໌

Step 5 - UI/UX



Content & Duration (~1 week)

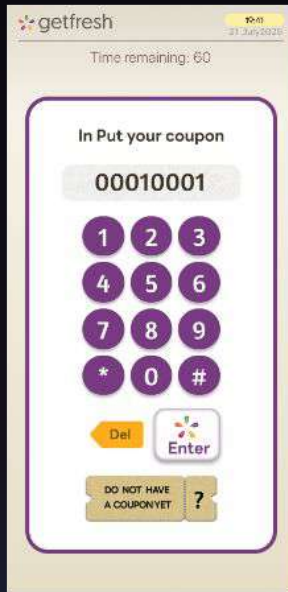
- x1 Machine Selection
- x1 Machine Play
- x1 Toy Collection

More UI / UX



Start

Tap start to play



Coupon input

User can the get the coupon from staff



Pick a coin

Tap the Coin with your finger ,then drag it



Drag the coin

Drag the coin into the machien



Spin the handle

Use your finger to draw around the circle



Get the capsule

watch the animation , VFX



Get the capsule

watch the animation , VFX



Result screen

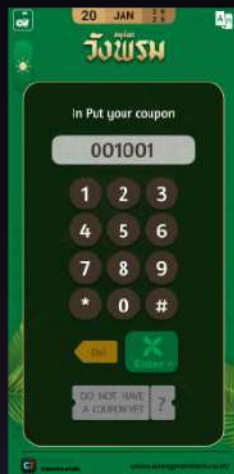
watch the animation , VFX

More UI / UX



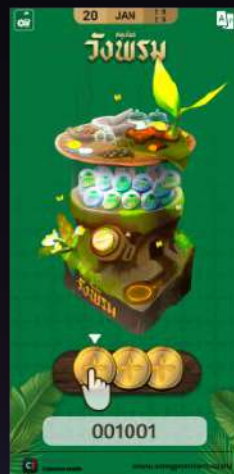
Home screen

Tap start to play



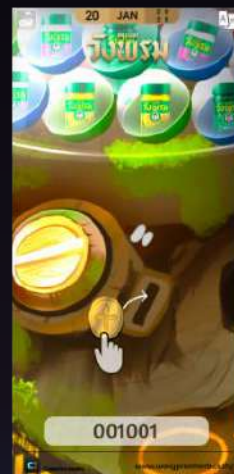
input coupon code

User can get the coupon from staff



Pick a coin

Tap the Coin with your finger, then drag it



Drag the coin

Drag the coin into the machine



Spin the handle

Use your finger to draw around the circle



Get the capsule

watch the animation, VFX



Result screen

watch the animation, VFX



Win screen

Tap to continue

More UI / UX



Step 6 Integration



Content & Duration

- Graphic Integration (~2 days)
- Development C# (~5 days)
- Playable

More Integration



Content & Duration

- Graphic Integration (~2 days)
- Development C# (~5 days)
- Playable

More Integration



Content & Duration

- Graphic Integration (~2 days)
- Development C# (~5 days)
- Playable

Step 7 Test and QA



Step 8 - Release On Site (Venue)



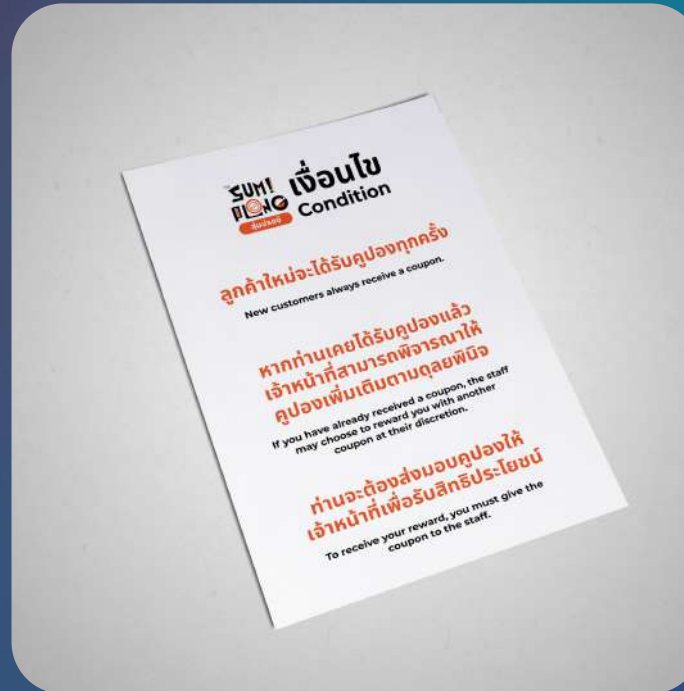
Kiosk Touch Screen Display

- IR Touch Screen
- High Resolution
- Build-in Windows
- Tempering Glass

Content & Duration

- Graphic Integration (~2 days)
- Development C# (~5 days)
- Playable

Step 8 - Coupon System



Content & Duration

- Graphic Integration (~2 days)
- Development C# (~5 days)
- Playable